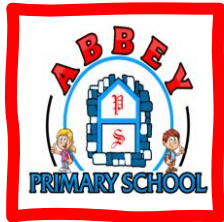


Abbey's Friday Bulletin



This Week's News

Friday
15th May
2026

P.1 Visit the Farm



The boys and girls in P.1 had the best day last Friday visiting the farm. We learnt so much and loved meeting all the animals.



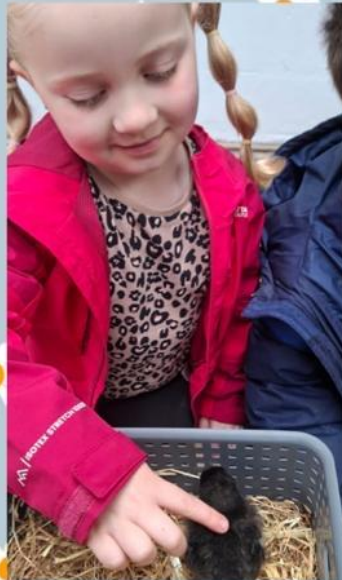
P1 trip to Streamvale





P1 trip to Streamvale

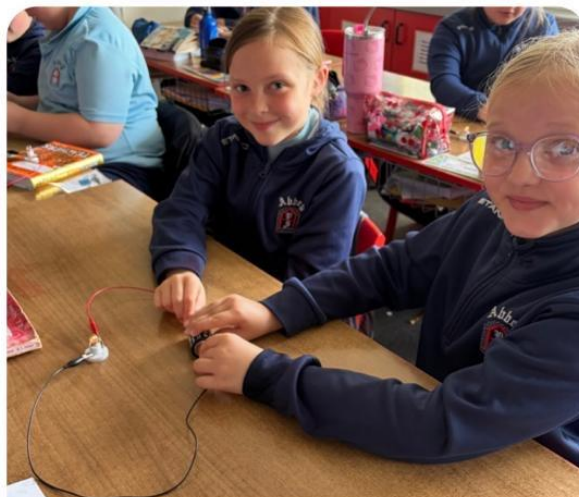




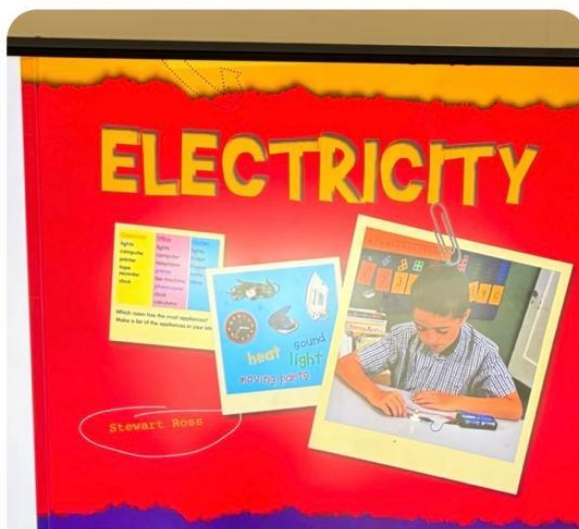
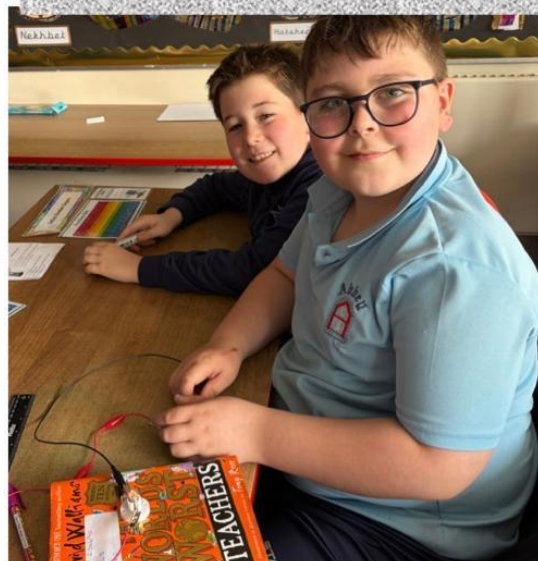
**P1 trip to
Streamvale**



Mr Gillespie, our resident electrician, worked with P.5C yesterday, imparting lots of his knowledge.

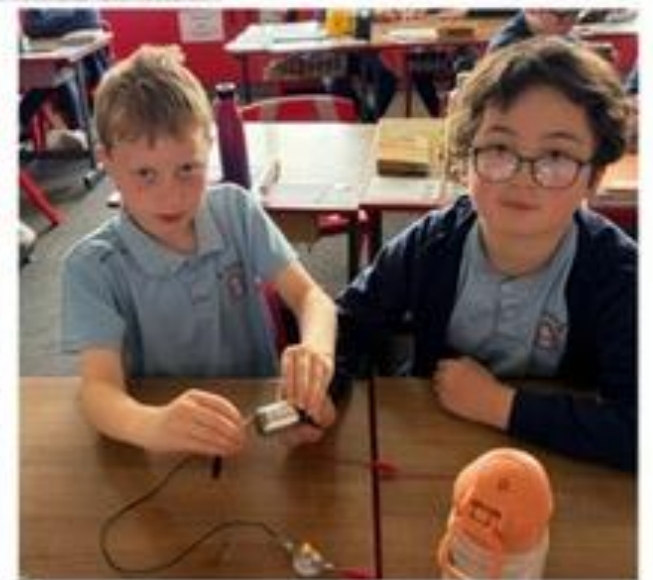


Circuits





Circuits



We have had Carlos from Hip Psychology in school this week.

'Our mission is to help build emotionally strong schools. We achieve this by delivering age-specific, tailored programmes specialising in wellbeing, social skills, behaviour, learning and performance.'

Today some of us learnt how to cope in tricky situations; how to be resilient, ask for help and stay positive and confident.







Dinners are £3.10 per day.

All dinners must be booked via ParentPay **by 8.30am** for the current day, preferably the night before.

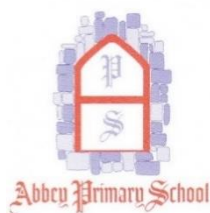
Cancellation with full refund must be done by parents via ParentPay.

Children on Free Meals do not need to book through the App

Monday 18th - Friday 22nd May 2026


Monday	Tuesday	Wednesday	Thursday	Friday
Golden Baked Cod Bites	Mild Beef Chilli	Lunch Bunch Chicken Curry & Mini Naan Bread	Roast Turkey with Stuffing and Rich Gravy	Cheeseburger with Tomato Ketchup
Steamed Broccoli & Baked Beans Chipped Potatoes & Baked Potato	Sweetcorn, Fresh Seasonal Salad & Coleslaw Steamed Rice & Oven Roast Wedges	Garden Peas & Diced Carrots Steamed Rice & Mashed Potatoes	Roast Carrots & Spring Cabbage Mashed Potatoes & Oven Roast Potatoes	Mini Corn on the Cob & Crunchy Veggie Sticks Chipped Potatoes & Baby Potatoes
Frozen Strawberry Yoghurt and Fruit Tub	Homemade Apple Sponge with Custard	Fresh Fruit Salad with Strawberry Yoghurt	Fruit Muffin and Milkshake	Oatmeal Biscuit with Orange Wedges

If anyone has any allergies, or changes to allergies, please contact the school office.



Important Dates

May & June 2026

Thursday 21st May	Sponsored Fitness Day
Friday 22nd – Monday 25th May (inclusive)	School closed (Half Term)
Tuesday 26th May	P1 Sports Day
Thursday 28th May	P5-P7 Sports Day
Friday 29th May	P2-P4 Sports Day
Wednesday 3rd June	P1 Induction Day (Early finish for current P1s – 12.45pm)
Thursday 25th June	P7 Leavers Service (P1-P6 pupils early finish – 12 Noon)
Tuesday 30th June	Pupils finish for Summer  (Early finish for all pupils – 12 Noon)